

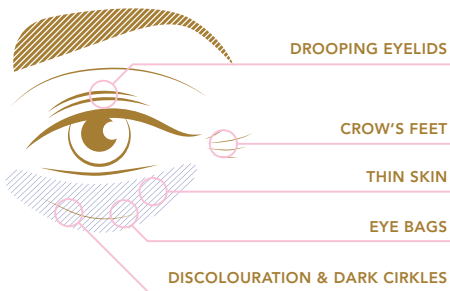




INSTANT EYES LOVE REGENERATION AROUND THE EYES

Typical signs of the aging process are crow's feet, dark circles under the eyes and bags under the eyes as well as drooping eyelids. Even the earliest signs can quickly result in a tired expression.

Instant Eyes Love is a tinted eye serum that immediately smooths fine lines and wrinkles, perfectly covers dark circles and tightens sagging skin on the upper and lower eyelids.



Instant Eyes Love consists of 99% natural ingredients that moisturize, care for and sustainably strengthen the skin. Among other

things, aloe vera and rich shea butter can be found in the list of ingredients. The two innovative main active ingredients in Instant Eyes Love are Argireline and Eye'fective™. They turn the serum into a highly effective and holistic care product that promotes a fresher appearance and healthier skin.

Argireline is an innovative peptide and a cosmetic alternative and supplement to injectable botulinum toxin that has been proven to reduce expression lines. Argireline inhibits the contraction of the muscles, thereby reducing the depth and volume of wrinkles.

Eye'fective™ consists of the concentrated power of two white flowers, the ingredients of which have been proven to counteract dark circles, wrinkles and drowsy skin.

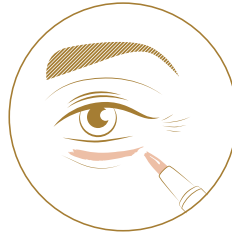
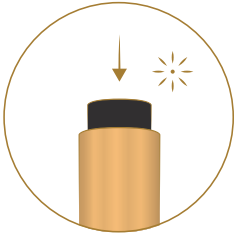
With Instant Eyes Love you get 2 twist pens in the colors LIGHT ● and DARK ● to be able to perfectly match every individual skin tone (mix & match).

APPLICATION

Shake the pen well. Hold it with the brush tip facing downward and press until a drop of serum appears. Each press of the button will produce a "click."

Apply both shades thinly to the desired areas with the tip of a brush and blend directly on the skin for a natural, even result.

Avoid facial expressions for 3-4 minutes after application. After 5 minutes you can continue with your usual eye make-up routine.



Clean any residuals from the brush after each application to prevent it from drying.

STUDIES ON EYE'FECTIVE™

THE EFFECT OF EYE'FECTIVE™ IN REDUCING EYE RINGS & FIRMING THE EYELIDS BACKGROUND

BACKGROUND

Eye'fective™ consists of the concentrated power of two white flowers, the ingredients of which have been used medicinally for centuries. Hawthorn (*Crataegus monogyna*) comes from Europe and is rich in flavonoids, which promote blood circulation. The Arabian jasmine (*Jasminum sambac*) comes from the southern Himalayas and is used for inflammatory processes and hyperpigmentation.

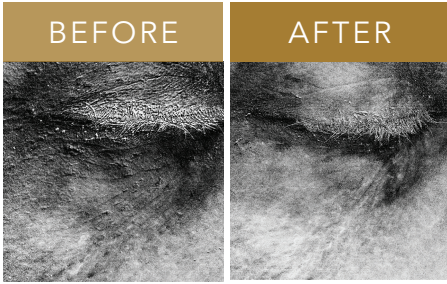
STUDY SETUP

The study was divided into two groups. On

the one hand, the effect of Eye'fective™ in reducing dark circles under the eyes and on the other hand in tightening drooping eyelids was investigated.

METHOD GROUP 1

20 test persons aged between 40 and 60 with dark circles under the eyes were treated for 28 days. The status quo was recorded on T0, T14 and T28. A placebo was compared with Eye'fective™ (2%), each of which was applied to the eye contour - one eye of each test person was treated with placebo and one with the active ingredient twice a day. The hemoglobin levels in the dark circles under the eyes (high-oxygen hemoglobin, pink, and low-oxygen hemoglobin, bluish) were shown in two different areas of the face



Individual result after 14 days of treatment with Eye'fective™.



Individual result for drooping eyelids after 24 days of treatment with Eye'fective™.

EYE'FACTIVE™ IS A MULTIFUNCTIONAL INGREDIENT WITH A „EYE TRIANGLE CARE“ EFFECT

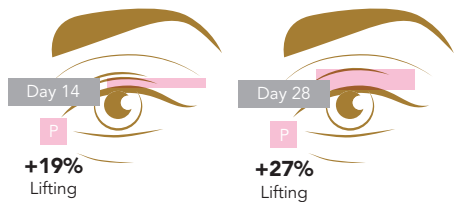
The three main indications for the eye contour are caused by various factors such as lack of sleep, increased stress, but also by:

- poor circulation
- melanin overproduction
- glycation of proteins
- slack tissue

METHOD GROUP 2

20 test persons between 40 and 60 years with drooping eyelids were treated for 28 days. The status quo was recorded on T0, T14 and T28. A placebo was compared with Eye'fective™ (2%), each of which was applied to the eye contour - one eye of each test person was treated with placebo and one with the active ingredient twice a day. The open eyes were photographed in high resolution to measure the height of the visible pre-tarsal skin (P). The larger the value P, the less the sagging and the tighter the tissue.

RESULTS



CONCLUSION

This study reveals that Eye'fective™ can significantly lift the upper eyelid.

measured (eye contour and cheek).

RESULTS

Both a significant reduction in the accumulated hemoglobine (-14%) and an increase in oxygen saturation (+ 2%) were found, which, compared to placebo, led to an 80% reduction in dark circles under the eyes within the first 14 days.

CONCLUSION

The study shows that Eye'fective™ improves the appearance of dark circles under the eyes.

Provital Group 2019