



## INSTANT TEINT LOVE PERFECT AFTER THE TREATMENT

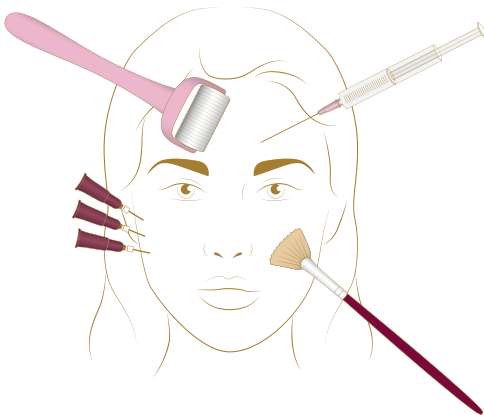
Instant Teint Love was created to support the skin in the healing process and to immediately reduce your patient's downtime after non- and minimal-invasive aesthetic procedures, such as fillers (e.g. hyaluronic acid), botulinum toxin, chemical & green peels, mesotherapy, microneedling, thread lifts, ultrasound and laser treatments.

Different factors can influence the healing process. Cutaneous wound healing with the involved cellular healing and molecular mechanisms can vary in speed and grade

depending on oxygenation, pre-existing conditions (e.g. diabetes, alcoholism), habits such as smoking or tanning, nutrition and others.

Thanks to its specific, natural ingredients, Instant Teint Love is an effective post-treatment care that has the ability to prevent infection, provide sufficient UV-protection, cover redness and erythema and reduce swelling, as well as prevent hyperpigmentation and nourish and soothe the skin.

Instant Teint Love comes in two different shades that are applicable to most skin tones. The two colours can be mixed to match each patient's skin tone in the best possible way. Its smooth texture helps prevent the product from sitting in wrinkles after application. Your patient can immediately return to social life enjoying a natural, even and youthful appearance of the skin.



# INSTANT TEINT LOVE

## ACTIVE INGREDIENTS

### COLLOIDAL SILVER

Silver has been used as an antimicrobial agent since ancient times. Silver ions have several antimicrobial sites of action on the target cells and, unlike antibiotics, are therefore associated with a low risk of bacterial resistance. They bind to bacterial cell membranes, damage the structure of the cell wall and lead to cell leakage. Silver ions transported into the cell disrupt the DNA and RNA of the bacteria and thus protein production and cell replication.<sup>6</sup>

Laboratory tests have shown that silver increases the sensitivity of bacteria to antibiotics and thus has a beneficial effect on wound healing by inhibiting inflammation and promoting neovascularization.<sup>7</sup>

### COLLOIDAL SILICA

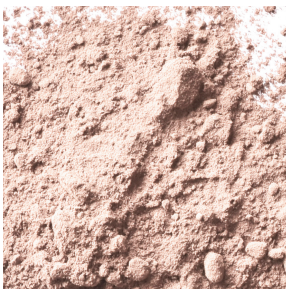
Silica is extremely moisture absorbent and is known to strengthen the connecting tissue, resulting in firmer skin. Silica can also help bind inflammatory compounds due to its absorbent properties. Because of its very small size, the surface area of colloidal silica is very high and its properties are amplified.

### SPF 20

Instant Teint Love has a built-in SPF of 20. Sun protection plays a major role in maintaining healthy skin. It helps protect from sunburn and carcinogenic changes in the skin but it also has other important effects. Extensive exposure to the sun is known to weaken the body's ability to fend off potentially harmful bacteria<sup>8</sup>, and it is recommended to avoid exposure to UV radiation after any form of treatment of the skin. Fresh scars usually show hypopigmentation, if exposed to UV radiation scars can develop permanent hyperpigmentation with additional swelling.<sup>9</sup>

### HAWTHORN

Hawthorn (*Crataegus monogyna*), originally from Europe and known as "the flower of hope", is rich in flavonoids and traditionally used to treat circulatory problems and can help reduce swelling and puffiness.<sup>10</sup>



## ARABIAN JASMINE

Arabian Jasmine (*Jasminum sambac*), originally from the Southern Himalayas and derives its name from the Persian “yāsamin” meaning “God’s Gift”, is particularly rich in glycosides and flavonoids iridoids and commonly used for their anti-inflammatory and anti-tyrosinase activity.<sup>11</sup>

## ALOE VERA

Aloe vera’s use can be traced back 6,000 years to early Egypt, where the plant was depicted on stone carvings. Known as the “plant of immortality,” aloe was presented as a funeral gift to pharaohs. Historically, aloe vera has been used for a variety of purposes, including treatment of wounds and hair loss. The gel is primarily used topically (applied to the skin) as a remedy for skin conditions such as burns, frostbite, psoriasis, and cold sores.<sup>12</sup>

## SHEA BUTTER

Shea Butter is a complex fat that contains several different fatty acids and is an excellent emollient for dry skin. It melts at body temperature and is quickly absorbed.

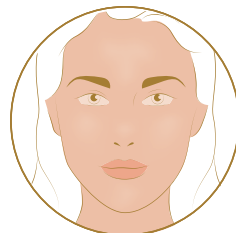
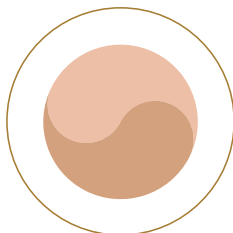
Shea Butter also contains cinnamic acid. Cinnamic acid derivatives are known to exhibit a range of bioactivities including antibacterial, antiviral, antifungal and antioxidant properties due to their strong free radical scavenging properties. It is also well known that cinnamic acid has antimicrobial activity.<sup>13</sup>

# APPLICATION

In case the patient has dry to very dry skin, as a first step apply Instant Hydrating Serum and wait until it is completely absorbed.

If desired, the two different shades can be mixed on a sterile tray or applied individually and then blended directly on the skin with a sterile gauze.

The result is an even, healthy-looking complexion that enables the patient to go straight back to everyday life or to work.



The skin should be cleansed thoroughly before application.